



Ring & Field: Saluki Movement



Brian Patrick Duggan, M.A.



Can You Pick
the Fastest?



Guidance from Breed Standards

- **FCI 2000: Gait/movement:** smooth, flowing and effortless at trot. Light and lifting showing both reach and drive without hackney action or pounding.
- **UK 1923 & USA 1927:** The whole appearance of this breed should give an impression of grace and symmetry and of great speed and endurance coupled with strength and activity to enable it to kill gazelle or other quarry over deep sand or rocky mountains.

Traditional Quarry



Other Quarry



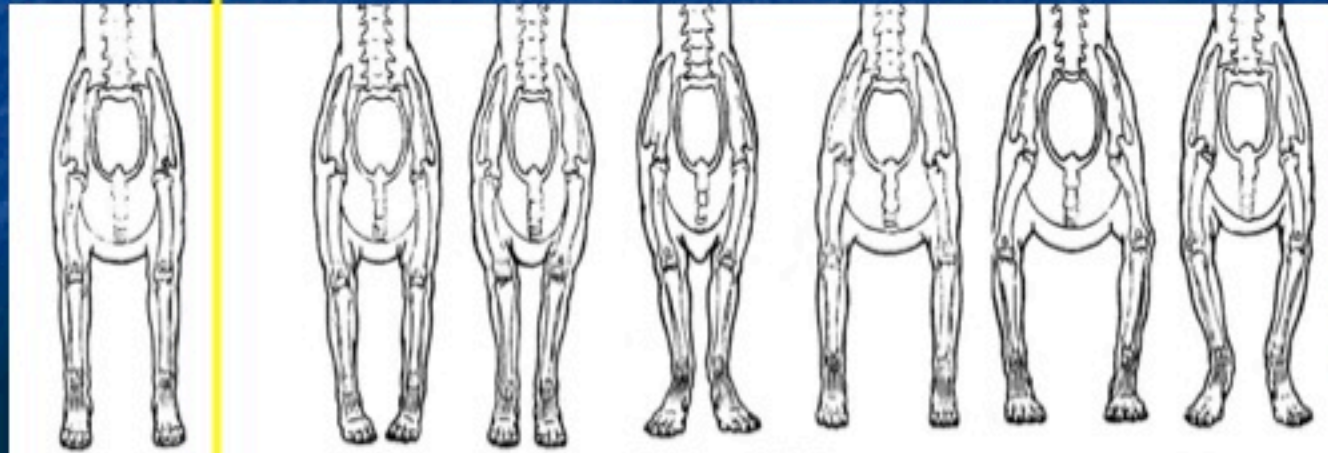
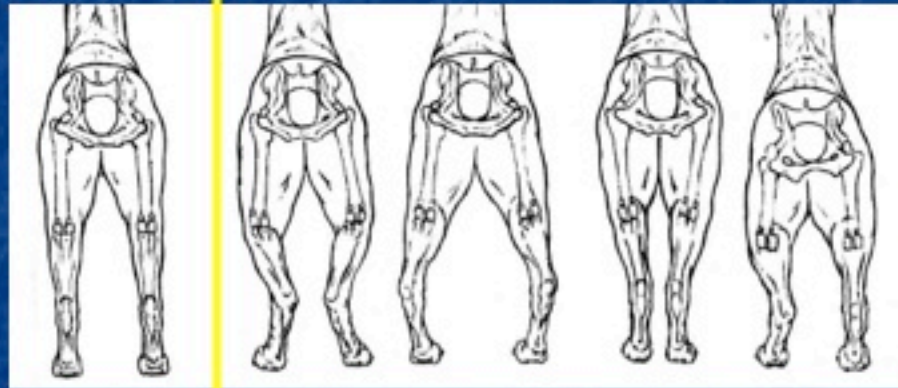
Are These Current Ring Types?



Predicting Movement?



Stack May Predict Gait



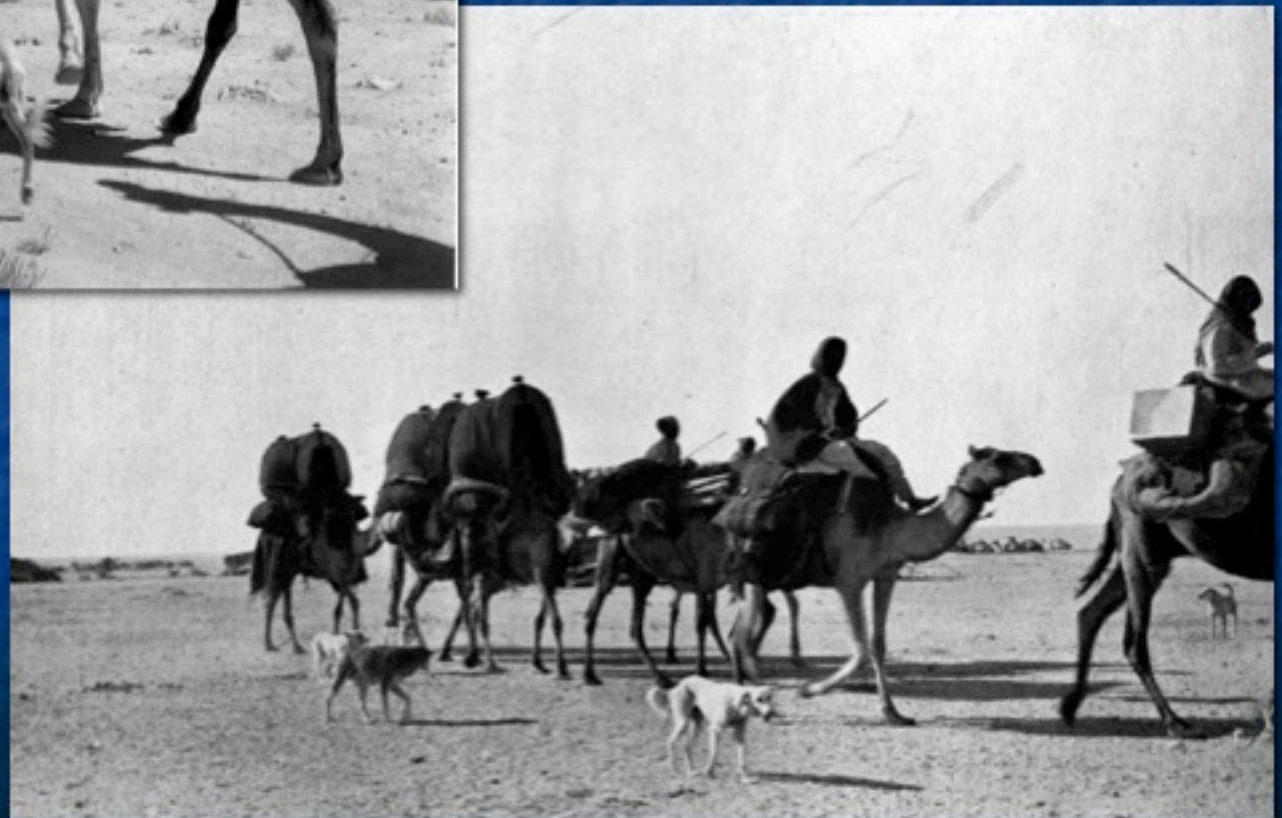
Gait May Predict Gallop



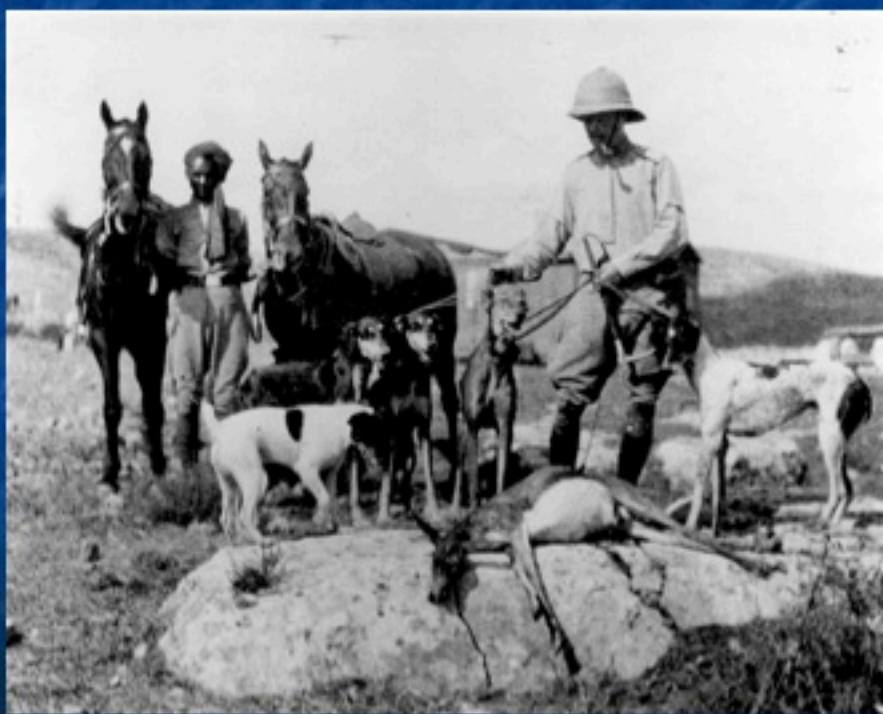
Strong Neck & Back



The All-Day Trot



Deep Sand to Rocky Ground



“Stacked” 1



Sarona Kelb



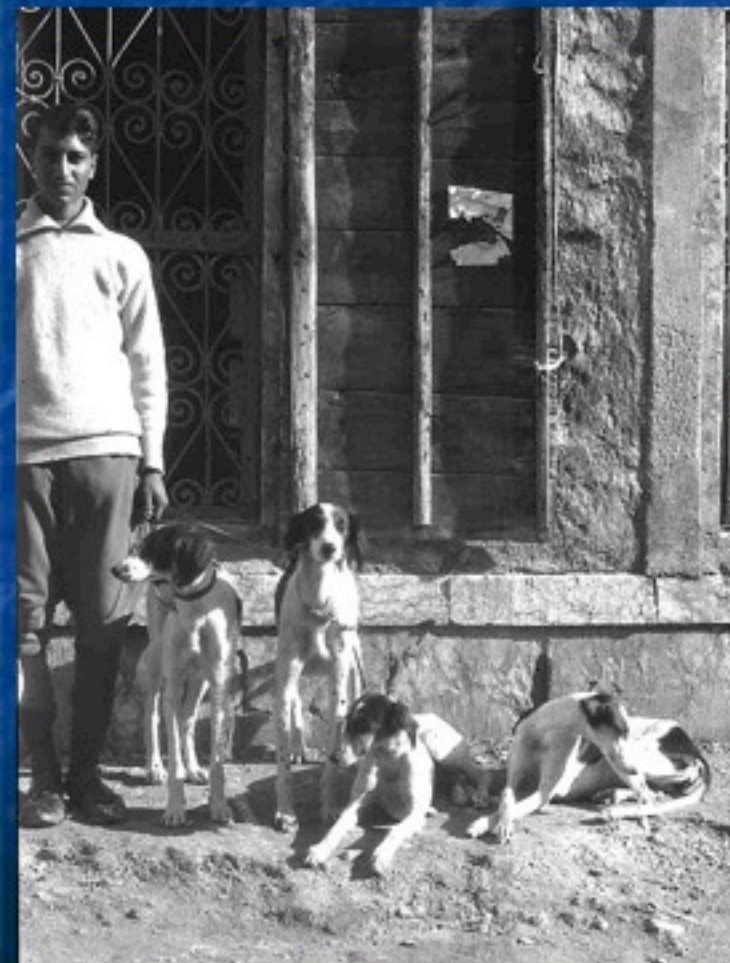
“Stacked” 2



Front Quarters 1



Front Quarters 2



Rear Quarters



California Coursing Salukis



“Things that you cannot see
are more important than things you can”

Dan Belkin, Ph.D.





Can You Pick
the Fastest?



Mark vs. Bill



Tack!

